

CAMPAIGN FOR THE SUMMIT

dreambuilding

“I’m delighted with the caliber and commitment of the teams we’ve assembled to manage both the Lower School construction project and other elements of the Master Plan. Everyone involved has been working tirelessly to ensure that all facets of the Master Plan proceed safely, securely, and according to schedule. That hard work and dedication is beginning to pay off. Our entire community should take pride in the progress we’ve made, and the promise of more great accomplishments to come.”

JOSEPH DEVLIN, Head of School

DREAMBUILDING: Campaign for The Summit

The Summit recently adopted a new theme for the school’s capital campaign – “Dreambuilding: Campaign for The Summit.” We chose this theme for several important reasons. The word “dream” symbolizes the importance of your donations to the endowment, and the many dreams those contributions will make possible throughout our community – from faculty development to student scholarships. “Building” alludes to the improvements to our campus facilities made possible by your support. The theme also reflects our emphasis on giving students the tools and inspiration they need to imagine – and achieve – their highest aspirations.

In the months to come, you’ll see the Dreambuilding theme used in various communications and events related to the campaign. This unique, powerful, and positive concept provides the ideal framework for our efforts to ensure the long-term strength and security of the school we cherish.

“The Summit has insisted that we bring the very best people on board for this project. Safety and structural integrity are the primary concerns of everyone on the team. We’re all taking a methodical, conservative approach to ensure that everything is done absolutely right, and everyone’s efforts are seamlessly coordinated.”

KURT STAHL, Hunt Construction Group

VISION TO REALITY: A Progress Report on the Master Plan

It’s been nearly two years since the trustees gave their blessing and approval to The Summit’s Master Campus Plan, and close to a year since we broke ground on the new Lower School. As the plan evolves from strategic framework to realized vision, its effects can be seen across our campus. Lower School construction continues on schedule, overseen by a team of engineers and architects dedicated to ensuring its safety and integrity. We also continue work on renovating our athletic facilities and playgrounds, improving traffic flow and infrastructure, constructing additional parking, and embarking on a campus-wide beautification program. The Master Campus Plan continues moving toward realization, bringing benefits to every member of The Summit community.



“DOING EVERYTHING RIGHT”

Earlier this year, The Summit retained Hunt Construction Group to act as program manager for construction of the Lower School, and to coordinate the work of other engineering firms involved with the project. These groups include the structural engineering firms of THP Limited and Wiss Janney & Elstner, as well as geotechnical engineers Thelen & Associates. In addition, Hunt Construction is facilitating the coordination of engineering activities with other groups involved with the project, including Turner Construction, the civil engineering firm of Kleingers & Associates, and the architectural firm of Steed Hammond Paul.



THE LOWER SCHOOL: LEARNING-CENTERED DESIGN

The beautiful new Lower School, one of the highlights of the Master Campus Plan, will serve as the home for our pre-K through grade 4 students. Both aesthetically elegant and highly child-centered, the building promises to deliver a superior learning experience for students in a spacious, safe environment. The new Lower School provides a complete and consolidated learning structure that combines grade-appropriate learning materials with a developmentally appropriate facility. Classrooms average more than 1,000 square feet, enabling students to move about freely, explore, and experience more hands-on learning. Many classrooms feature private bathrooms, as well as outdoor porches, that enable teachers to extend the learning experience out of doors with minimal effort.

The second floor features an unprecedented state-of-the-art laboratory and dedicated science classroom. These two science facilities, among the best in the nation, set a new standard for science education. The rooms – each approximately 1,000 square feet – are filled with updated equipment and extra storage space, enabling students to participate in a full range of experiments, projects, and hands-on science learning.

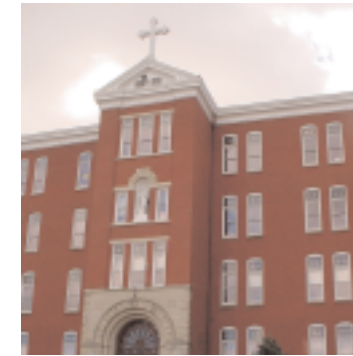
The new building’s bright and spacious library will allow us to offer more books and periodicals to Lower School students. Featuring a skylight above the two-story library, it is an ideal setting for teachers and students to gather in small groups to read and learn.

The Lower School: Everything Under One Roof

The new Lower School brings together a breadth of facilities together under one roof, including:

Acoustically superb music room

29 Classrooms, many with connected bathrooms and patios



Regulation-size gymnasium for physical education and athletic programs



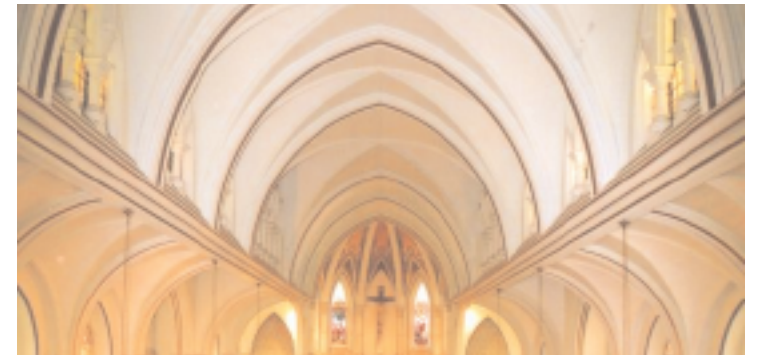
Computer lab featuring state-of-the-art wireless technology



4 Conference and multipurpose rooms for prayers, naps, meetings, teacher preparation, and special gatherings



Spacious dining hall



Art center with kiln and graphic design capabilities

Innovative science rooms with hands-on laboratories



Bright and spacious library almost three times the space of the existing facility

A COMMITMENT TO COMMUNITY

The Summit is committed to fostering a sense of community and connection between children, faculty, and staff at every possible opportunity. The new Lower School reflects this commitment. Multipurpose rooms on each floor allow children to gather for prayers, meetings, naps, and get-togethers. In our computer lab and throughout the school, a range of state-of-the-art technology features like wireless Internet access connect students to each other and to global resources. Administrative offices, health services, and conference rooms are grouped around a single area, allowing staff to communicate more informally and remain available to students at all times. With the dining hall, library, art center, music room, computer lab, science facilities, and gymnasium all under one roof for the first time, students will spend less time moving between buildings, and more time learning and growing together.

A COMPLETE EDUCATION

The education of our children extends far beyond reading, writing, and arithmetic, and the Master Campus Plan provides students with the resources that they need to grow physically and artistically. The new facility features a 1,500-square-foot art room with plenty of materials to inspire artistic expression. The building's music room is an acoustically superb, soundproof space that gives students the opportunity to play, practice, and develop a love for music.

A campus-wide renovation of our athletic facilities is also underway. The new Lower School offers a full-size gymnasium that will allow for a breadth of physical education programs, after-school activities, and rainy day events. A new athletic stadium will also be constructed, featuring increased seating capacity and better views, concession stands, and a plaza area. When completed, the new stadium will be a highly visible and effective symbol of school spirit.

The Goal of the Summit Campaign:
\$20 Million

New Lower School
\$11 Million



Endowment
\$9 Million

With the completion of the gymnasium for the new Lower School, there will be a total of three gyms on campus, including Flannery and the newly-renovated and air-conditioned Holmes Gym. An extensive renovation of Williams Field, including the addition of synthetic turf, is in progress, and there are plans for a new practice field near Flannery Gym. Plans are underway for new primary and pre-school playgrounds. All of these improvements will enhance the school's physical education and athletic programs and increase school pride.

An emphasis on the quality of life at The Summit extends to all components of the Master Campus Plan – from athletic facilities that encourage teamwork and collective achievement, to landscaping programs that make the campus more hospitable. Improvements in traffic flow and the addition of two parking garages will make it easier to park and for parents to drop off and pick-up students, enhancing accessibility for the entire Summit community. The completion of the Lower School will result in a unified, child-centered learning community within a warm, nurturing environment, where every Summit student feels engaged, secure, and supported. The significant progress that The Summit has made toward realizing the Master Plan will continue to make our entire community stronger and more connected in the months to come, expanding opportunities for our students.

CONSTRUCTION MILESTONES

As we enter the final phase of construction, the Master Campus Plan is really taking shape. While each day brings exciting changes to The Summit campus, we'd like to take a moment to highlight a few of our construction milestones.

January '03
Renovation begins on fourth-floor Administrative, Business, and Development Office space

June '03
Construction begins on new Lower School, Grandin Road entrance and circle, widening of Herrick Road and Convent Lane entrances, parking, athletic stadium, playing fields, and playgrounds

July '03
Fourth-floor renovations completed

Fall '03
Entrance, driveways, and circle completed

September '04
Lower School completed

Fall '04
Ongoing improvements to parking garages, athletic stadium, playing fields, and playgrounds

2003 JANUARY FEBRUARY MARCH APRIL MAY JUNE JULY AUGUST SEPTEMBER OCTOBER NOVEMBER DECEMBER 2004 JANUARY FEBRUARY MARCH APRIL MAY JUNE JULY AUGUST SEPTEMBER

CAMPAIGN HIGHLIGHTS

Like the construction of the Master Campus Plan, The Campaign for the Summit is making great progress. To date, we've been able to achieve many of our critical milestones – and we're delighted with both the success of the campaign and the enthusiasm of those participating. For those who haven't been with us since the beginning, we've provided a few of our celebratory moments.

January '03 thru March '03

- Recruited five families (10 people) to chair the campaign
- Recruited the Steering Committee for the campaign
This committee consists of 15 members and the chairs
- Reached the milestone of 100% trustee participation
- Gifts from trustees equal \$4,231,943
- Reached the milestone of 100% faculty/staff participation
- Gifts from faculty/staff equal \$108,744

April '03 thru December '03

- "Quiet phase" of major gift solicitation begins
- Five \$1 million gifts secured
- One \$1.5 million gift secured
- Total gifts contributed by Summit families, including trustees, collected during the quiet phase reaches a milestone of \$14,209,835

January '04 thru March '04

- Recruited and trained more than 100 campaigners
- Major gift phase of the quiet phase continues

Fall '04

- General phase launches
All alumni, parents, parents of graduates, and grandparents take part in transforming The Summit Country Day School

The Summit Endowment

Summit Campaign Endowment Goals:

\$9 Million

Financial Aid and Scholarships

\$4.5 Million

Professional Development for faculty and staff

\$1.75 Million

Improvements to buildings and grounds

\$1.75 Million

Educating for Character program

\$1 Million

CONTINUING A TRADITION OF EXCELLENCE

The Summit Country Day School has earned a reputation as one of the nation's outstanding Catholic educational institutions. Exceptional faculty and staff create an environment where, every day, students are challenged to bring forth their best efforts spiritually, academically, physically, socially, and artistically. To continue this tradition of excellence and ensure the school's financial future, we have launched The Summit Campaign.

The Summit Campaign has established an ambitious goal for increasing the school's endowment. With your help, we will triple the endowment from its current \$4.5 million to \$13.5 million. This campaign is a critical first step in ensuring the financial viability of The Summit over the long term, helping us strengthen our operating budget by reducing our dependence on tuition and annual giving for meeting day-to-day expenses. In accordance with guidelines established by the National Association for Independent Schools, the Board of Trustees has affirmed a long-term endowment goal of \$35 million.

A BREADTH OF BENEFITS

The largest portion of our endowment development goal will be used to offer financial aid and scholarships, allowing us to provide promising students with the opportunity to join a diverse community of learners.

Our goal is to offer need-based scholarships to an additional 36 students – an impressive 57% increase in student scholarship participation. Additional endowment funds will allow us to offer scholarships below the seventh-grade level.

Our excellent faculty and staff are central to our students' success, and we must continue to attract and retain outstanding individuals. An additional \$1.75 million will more than double the amount currently allotted for professional development.

Increasing the funds available for buildings and grounds will allow us to continue to apply the most rigorous standards for the safety and appearance of The Summit campus. Endowment funds will support the ongoing maintenance of the new Lower School as well as other campus buildings.

Our Educating for Character program is the cornerstone of our commitment to fostering the future leaders of our communities. The Summit Campaign will help provide administrative funds for research, training, and materials to preserve this hallmark program.

BUILDING THE FUTURE TODAY

You can begin to make a difference in the future of The Summit by endowing a Family Fund. With a contribution as low as \$2,500, you'll be on your way to creating a legacy that will benefit The Summit community both today and in years to come. You can add to your Family Fund over time, and watch as it grows to become part of the future success of The Summit.

Family Funds can be established to honor an individual student, or a faculty or staff member who made a difference in your student's Summit experience. You can also create a Family Fund to remember a loved one, or to recognize a program that has been of special significance to you or your student.

"The Summit is a wonderful place," notes Mike Ranieri. "Everyone there has made us feel very much at home, and the teachers and administrators are terrific. We look forward to having Allison continue her education at The Summit; our Family Fund symbolizes the enthusiasm we feel for the school."

Family Funds are often created by parents to recognize their child's growth and success at The Summit. That's certainly the case with the Mike, Fran, and Allison Ranieri Family Fund, established by Fran and Mike Ranieri, proud parents of Allison, a seventh-grade honor student. The Mike, Fran, and Allison Ranieri Family Fund is an example of the critically important support The Summit receives from parents.

Family Funds take a number of forms, each of which gives you the opportunity to make a meaningful contribution to The Summit.

TO ESTABLISH A FAMILY FUND...

For more information on how you can establish a Family Fund, please contact Anne Ward Stern, Director of Development, 513.871.4700 x242, or send email to stern_a@summitcds.org.

Family Funds
(\$2,500-\$9,999)

The Summit directs Family Fund income within the four areas of endowment support: faculty enhancement, improvement of grounds and buildings, student scholarships, and innovative academic programs. Your gift is recognized in The Summit's Annual Report.

Endowed Funds
(\$10,000-\$39,999)

With an Endowed Fund, income is directed to one of the four areas the endowment supports, and you are informed of the specific use of the income. Your fund is recognized on the school's Family Endowed Fund plaque and in our Annual Report.

Benefactor Funds
(\$40,000-\$99,999)

You help to direct the use of your Benefactor Fund income, selecting from a list of opportunities provided by the Head of School. Your fund is recognized on the school's Family Endowed Fund plaque and in our Annual Report.

Named Founder Funds
(\$100,000 or more)

You may establish a fund in the name of your choice to be designated for an area of support mutually agreed upon between you and the school, such as a faculty chair or scholarship. Your gift is recognized on a plaque and in our Annual Report. Your family is also invited to all Summit presentations and receptions.

Professional, caring, dedicated

Summit fourth-grader Maggie MacConnell was diagnosed with juvenile (Type 1) diabetes several years ago. But thanks to the efforts of Lynn Lippert, a staff nurse at The Summit, Maggie's school days are very much like any other child at the school. "Mrs. Lippert helps me when I'm sick," explains Maggie. "She tests my blood every day, and watches over me."

In honor of Nurse Lippert's dedication to their daughter, Maggie's family has established the Lynn Lippert Endowed Family Fund in support of The Summit's endowment campaign. "This school is a better place because of people like Mrs. Lippert," says Maggie. "She is so special."

The family of Maggie MacConnell has established a Family Fund in honor of Lynn Lippert, one of The Summit's dedicated staff nurses.



“The Summit Campaign creates a once-in-a-lifetime opportunity for every member of The Summit community to play a role in the greatest transformation to ever occur at this fine school. The commitment we’ve witnessed in the early stages of the campaign is a testimony to the value of the education provided by The Summit.”

JOSEPH DEVLIN, Head of School

EVERYONE MATTERS

Over 125 volunteers have already stepped forward to assist in generating enthusiasm for this effort. When asked, 100 percent of The Summit’s trustees and 100 percent of the faculty and staff contributed in support of constructing a new Lower School and building the endowment. This unanimous support is a symbol to those who will be called upon in the coming months.

In order to reach the goals of fulfilling The Summit’s Master Campus Plan and strengthening The Summit’s future through endowment, everyone’s help is needed. The support of the entire Summit family is essential to our mission.

WE NEED YOU

We need volunteers to help join us in shaping the future of education at The Summit. Volunteers will team with campaign solicitors to tell their story about the impact The Summit has had on their family. This is an opportunity for Summit families and alumni to share their enthusiasm and excitement to benefit The Summit in an amazing way. We need your help as we encourage parents, alumni, grandparents and parents of graduates to participate in the campaign. For more information, or to volunteer and sign up for a 20-minute training session, please contact Anne Stern, Director of Development at (513) 871-4700 ext. 242 or stern_a@summitcds.org.

Michael J. Chasnoff, CFP, President of TruePoint Capital, is pleased to underwrite this campaign publication.

STEERING COMMITTEE CHAIRS

Peggy and Gary Johns
Peg and Tim Mathile
Marty and Nick Ragland '58
Lynda and Ray Schilderink '64
Jenny and Tom Williams '71

STEERING COMMITTEE MEMBERS

Diane and JB Buse '75
Sharon Frisbie '69
Nancy Grote
Mag and Richard Joseph '79
Lisa and Tim Michel
Phil Schneider
Patty and Eric Steinman
Rich Wilson
Joseph Devlin
Anne Stern
Michele Walters

TRUSTEES

Elaine Billmire
Mark Bodnar
Mark Burke
Renee Dunn
Greg Edwards
Tom Heekin '51
Eric Kearney
Ken (Chip) Klosterman, Jr. '80
Marian Leibold
Valerie Newell
Mary Beth Price
George Thurner '77

PARENT CAMPAIGNERS

Roy Benecchi
Chris and John Browner
Sarah and Mike Chasnoff
Sean Conway
Ethna and Todd Cooper
Karrie and Chip Crowther
Cheryl Dean
David Feld
Tom Gabelman
Madeline and Pat Gilligan
Kathryn Harsh '84
Greg Hartmann
Beth Jantsch
Pam Noe
Derek Roudebush
Ben Russert
Emina Short

ALUMNI HONORARY CHAIRS

Mary Foss Brinkmeyer '67
Sharon Williams Frisbie '69
Trey Heekin SBS '54
Fred Rentschler SBS '53
Gaby Bouscaren Reynolds '66
Tom Theobald SBS '50

ALUMNI STEERING COMMITTEE

Jane Buse Burke '70
Rob Dziech '88
Kathry Stahl Harsh '84
Keith Harsh '84
Steve Headley '84

Jeff Hock SBS '71
Mark Hogan SBS '67
King McMurry '73
Jeanne Rolfes '57
Bren Ryan SBS '59
Nat Verkamp Schoeny '65
Alane Schloemer Shoemaker '68
Julie Stautberg '85
Joe Ventura SBS '65
Ann Vollman '62
John Warrington SBS '71

FACULTY AND STAFF SOLICITORS

Mary Jean Anderson
Kimberli Ashcraft
Robert Baechtold
Bruce Bowdon
Mary (Foss) Brinkmeyer '67
Helen Clark
Ty Copeland
Cammie Corder-Nelson
Marianne Cramer
Jeanne (Elfers) Cullen '75
Monica (Haas) Desch '90
Ed Escudero
Diane Fee
Mike Fee
Josie (Walter) Funk '80
Robert Gorey
Sue Heighberger
Joan Hilton
Marianne Humpert
Brian Hurst
Angelina Irizarry

Michael Johnson
Kathleen Kane
James (Pat) Kelly
Patti Kenney
Karen Koch
Jeanne Koepfer
Marianne Martin
Roger Martin
Walt McBride '82
Phyllis Mendel
Theresa Merrill
Linda Moeggenberg
Holly Northern
Elaine Pearl
Karen Pohl
Megan Rademacher
Deborah Richey
Sally Ryan
Joan Ryder
Barb Sander
Kelley Schiess
Sherry (Schloemer) Schneider '81
Phyllis Schueler
Kathleen Scott
Rebecca Slater
Jeff Stayton
Shirley Stikeleather
Debe Terhar
Ann Thelen
Martha Twombly
Ken Uckotter
Diane Uckotter
Anne Venner
Julia Ventura